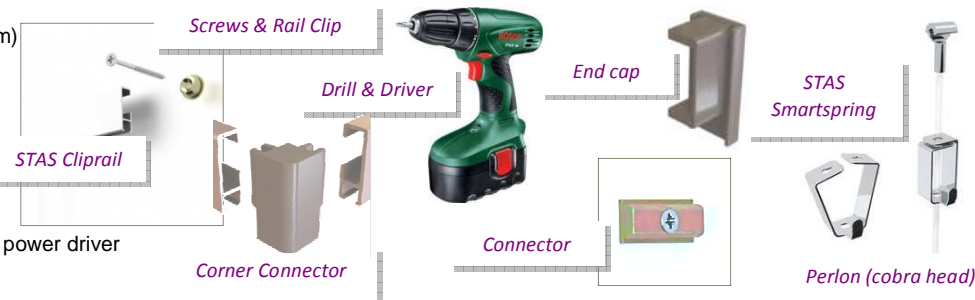


STAS System - Installing a Cliprail Hanging System

You will need:

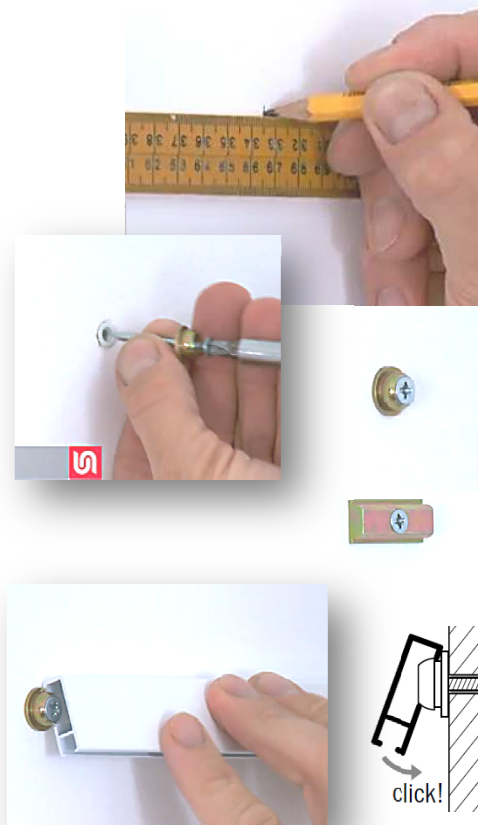
- Cliprail (white or aluminium)
- Rail Clips
- Screws & plugs
- Connector
- End caps
- corner joints (optional)
- Perlons (cobra head)
- Smartsprings (hanger)
- power drill / screw driver / power driver
- Rule / measure



The STAS Cliprail hanging system is the most popular of the STAS systems we stock. It is simple to install and will have an immediate impact. In its simplest format it is very easy to establish a “feature hanging wall” for displaying artwork. This sheet works on an assumption that you will use straight lengths along one wall: in fact it is more of a DIY job rather than a framing project.

Planning and Fixing the Rail

1. **Cliprail** fixes to the wall on “rail clips”. The rail (**available in white or aluminium**) can sit at any level along the wall. The first job is to determine how far below the ceiling (**it can abut the ceiling**) you wish to place the rail. Using a rule and pencil, place “+” marks at **30 cm** intervals along the length of the wall, ensuring that the centre of the crosses are exactly level (possibly using a spirit level) and at the required distance below the ceiling.
2. Where you need to join two lengths of rail, make a mark at the centre of the proposed join (ready for a **connector**).
3. Use a drill and suitable masonry bit to drill holes at each mark and insert a screw plug. Then screw **rail clips** into each of the plugs and (as appropriate) a connector at any points marking where the rails will join.
4. If the rails will not butt up against a wall return (and the rail end may be visible) insert **end caps** to the rail before clipping the rail to the rail clips.
5. To attach the cliprail to the rail wall clips (and connector), tilt the top edge of the rail backwards, hook the top lip of the groove on the reverse of the cliprail over the top lips of the wall clips. Bring the bottom edge of the clip rail groove down and push firmly so that it pushes over the bottom lips of the wall clips.
6. If, instead of setting up the rail along a single flat wall, you wish to wrap around either the outside or inside of a 90° bend, you can use **corner connectors**. They simply plug in to each of the two rail ends (**see opposite**). Also note you can easily cut cliprail lengths to fit, using a hacksaw.



Adding Hangers

7. The **smartsprings** need to be pinched together, allowing the holes on the top to align. Pass the blank end of the **perlon** hanger down through the lined up holes at the top of the smartspring and out through the bottom end. You can have more than one hook on a perlon as long as the total weight of framed work being held **does not exceed 4 kg per perlon**. To hang heavier items use more than one hanger and / or replace the smartsprings with **zipper** hangers, and the perlons with stainless steel hangers (**see HH sheet 31 for suggested options and loads**).
8. **DO NOT CUT PERLONS TO LENGTH. COIL ANY EXCESS PERLON, ROLL AND ALLOW TO REMAIN HIDDEN BEHIND THE ARTWORK BEING HUNG.**
9. To insert perlons into the hanging system, rock the **cobra** head backwards so it can slip behind the bottom lip of the cliprail and then rotate the cobra head backwards so that it is hanging neatly from the clip rail. The perlons can simply slide left and right to the desired position along the rail.
10. Smartspring hooks can move up and down the perlons by pinching the top of the hooks and then moving them to the position required before releasing to allow the smartspring to grip once more.

